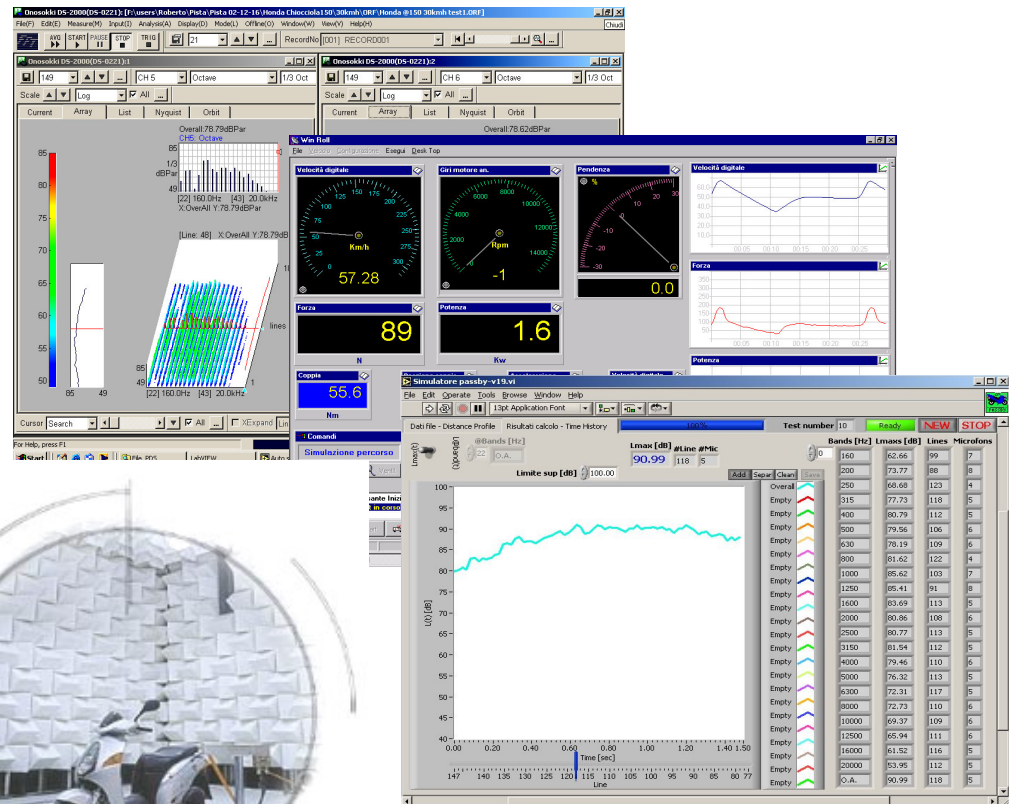
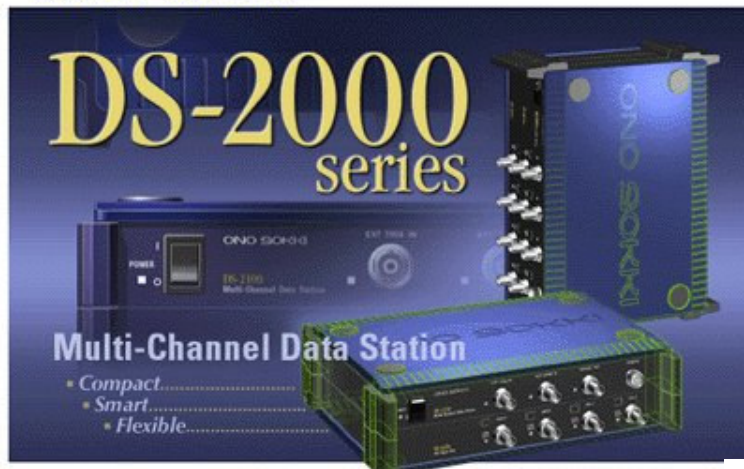


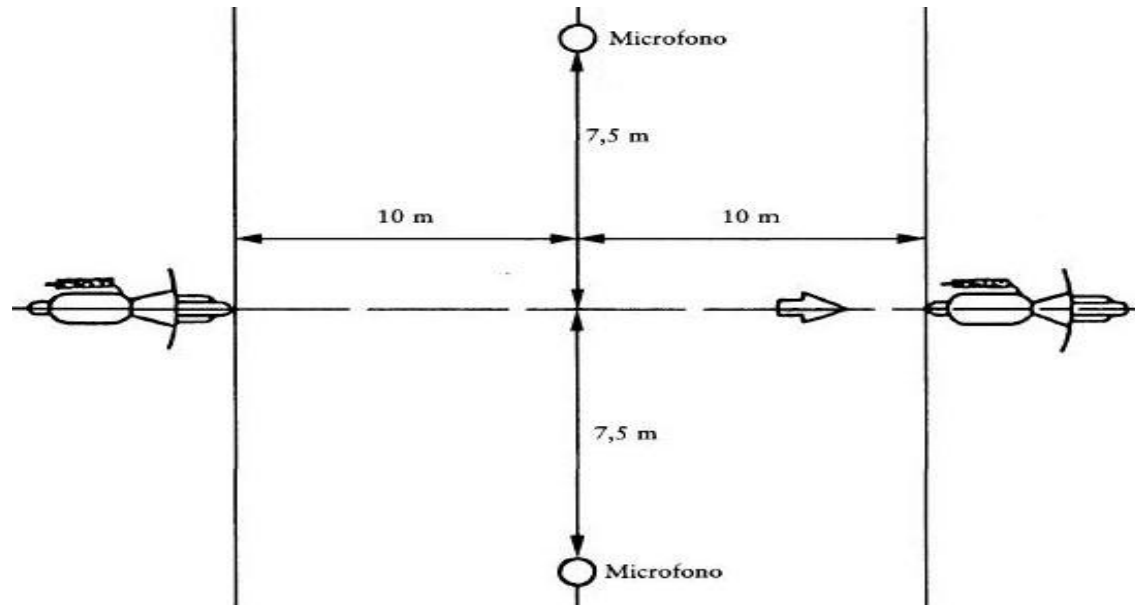
Simulazione del test di Passby in camera semianecoica



ONO SOKKI

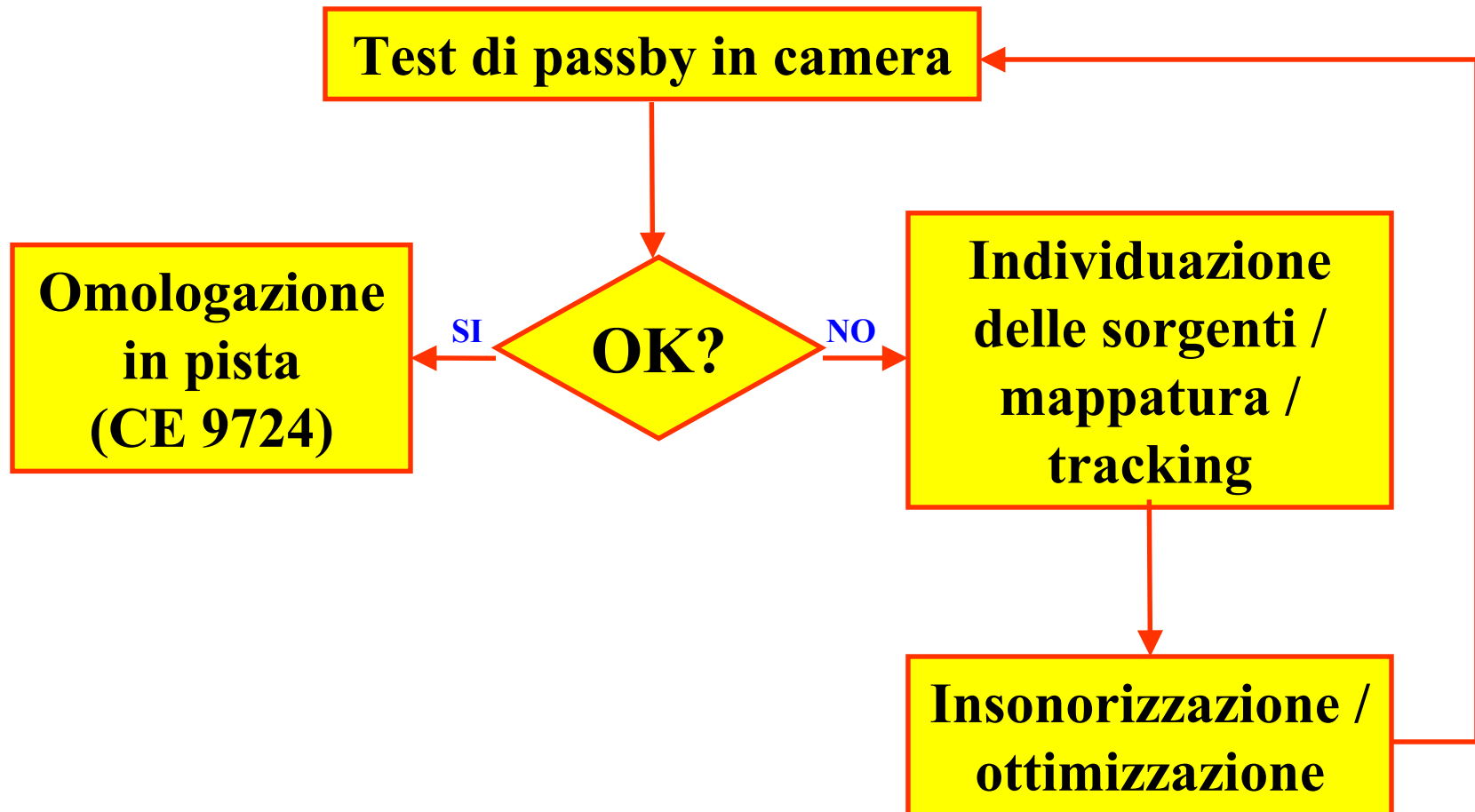


Test di Passby in pista (CE-9724)

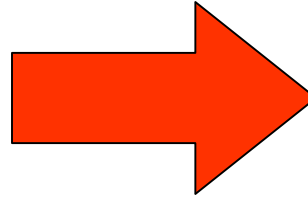


- Tratto di pista lungo 20metri
- Il veicolo si avvicina al tratto con velocità costante
- Attraversamento del tratto in piena accelerazione
- Acquisizione da un unico microfono al centro del tratto

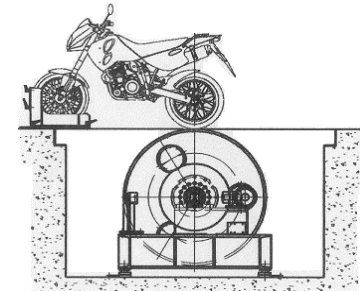
Veicolo da omologare



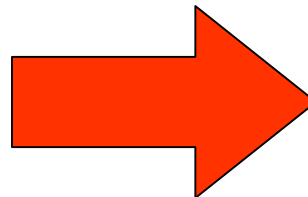
Vantaggi della camera semianecoica:



- Ripetibilità prove
- Affidabilità misure
- Comparazione
- Condizioni ambientali



In camera rispetto alla pista:

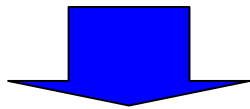


- Riduzione geometria
- Moto ferma
- Simulazione stradale
- Schiera microfoni

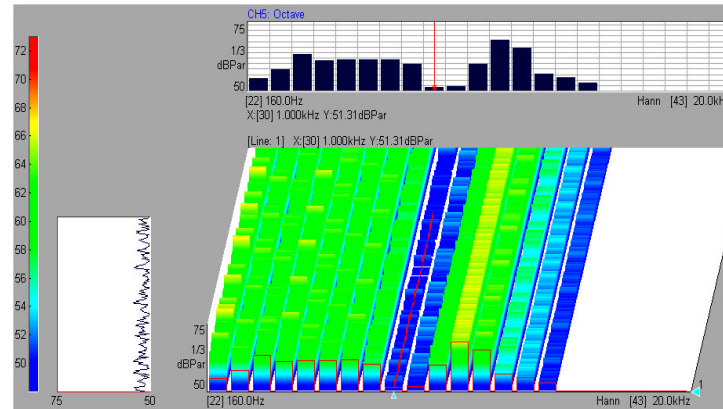
Corrispondenza camera-pista con sorgenti calibrate

- Sorgente sonora dodecaedrica (camera & pista)

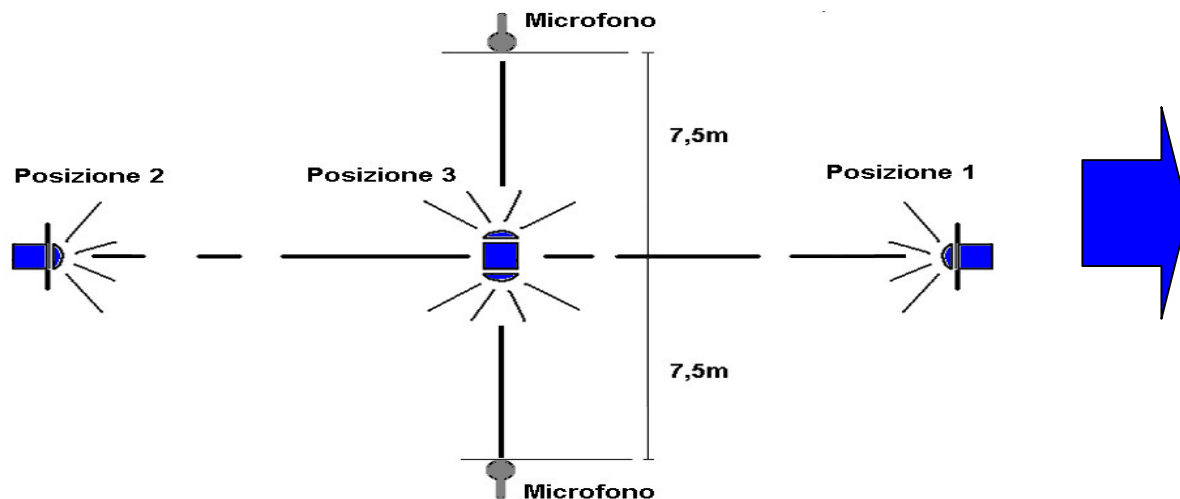
Stesso "buco" di interferenza distruttiva



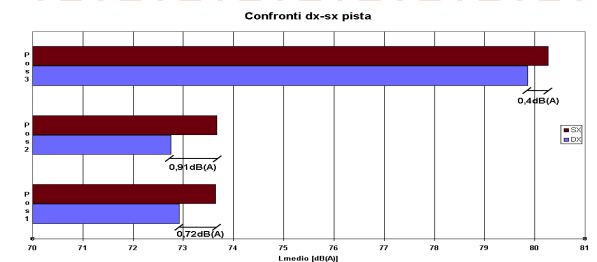
Altezza microfoni in camera (30cm)



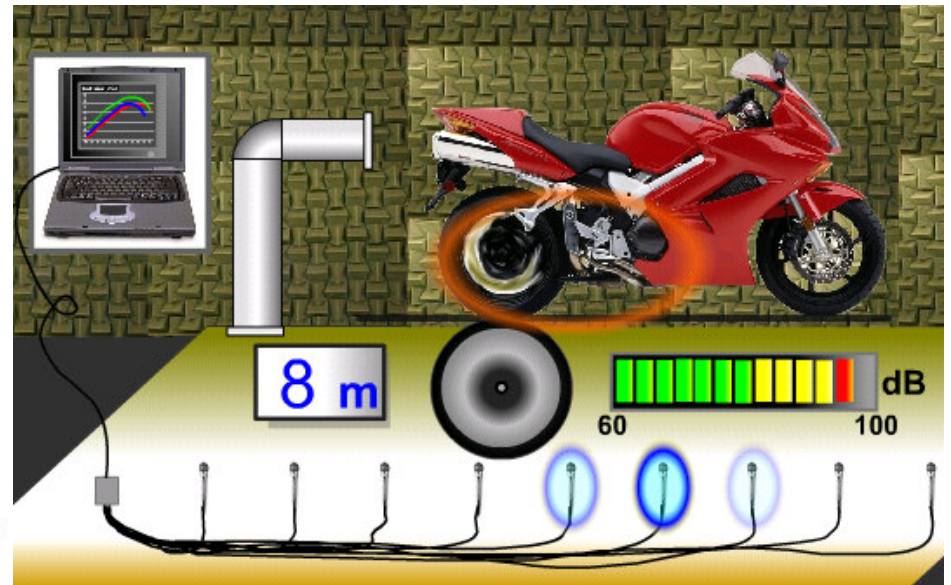
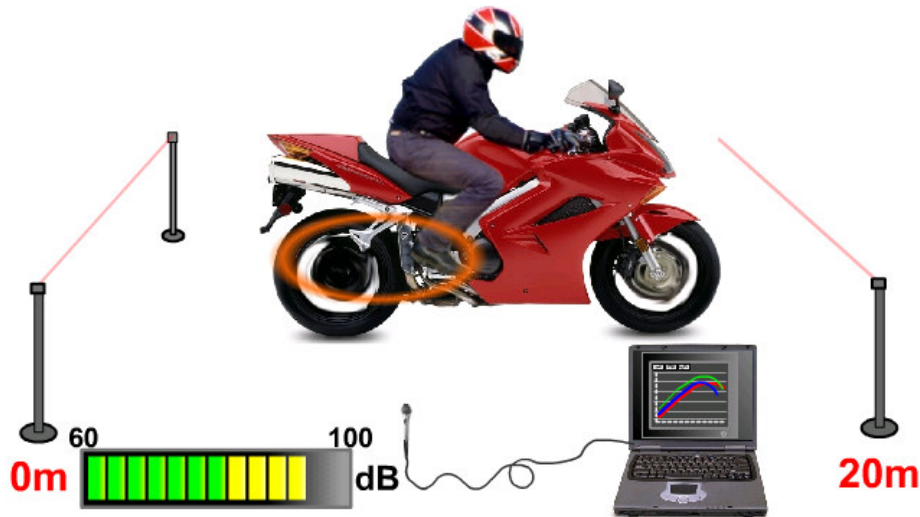
- Cassa acustica (camera & pista)



Differenze tra lato destro e sinistro nella pista CPA di Bologna (1dB)



Prove in pista e in camera

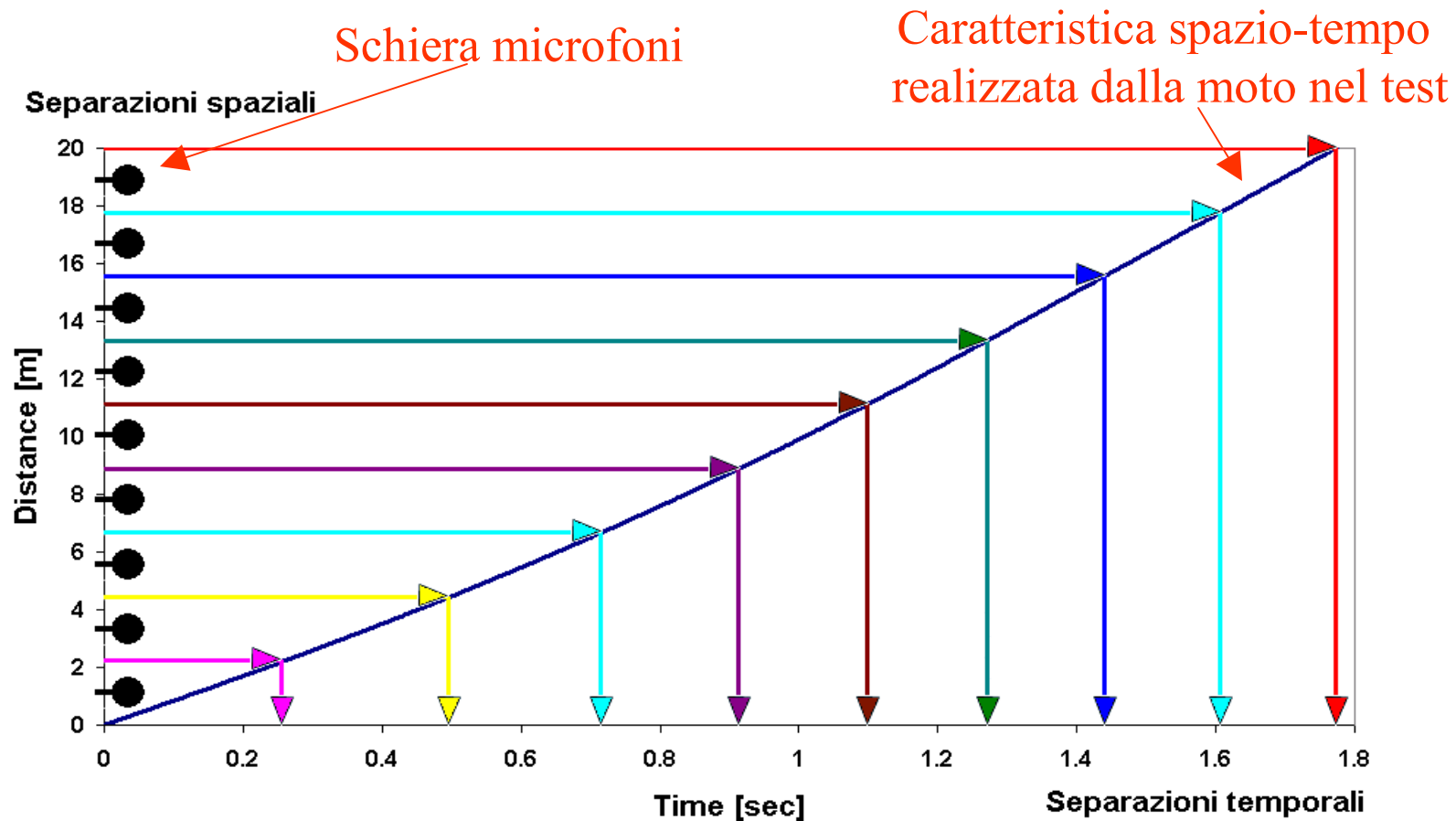


- Prove in pista per confronti, ulteriori conferme, omologazioni finali.

- Prove in camera di ottimizzazione e comparazione.

Conversione Spazio-Tempo

(discretizzazione del percorso)

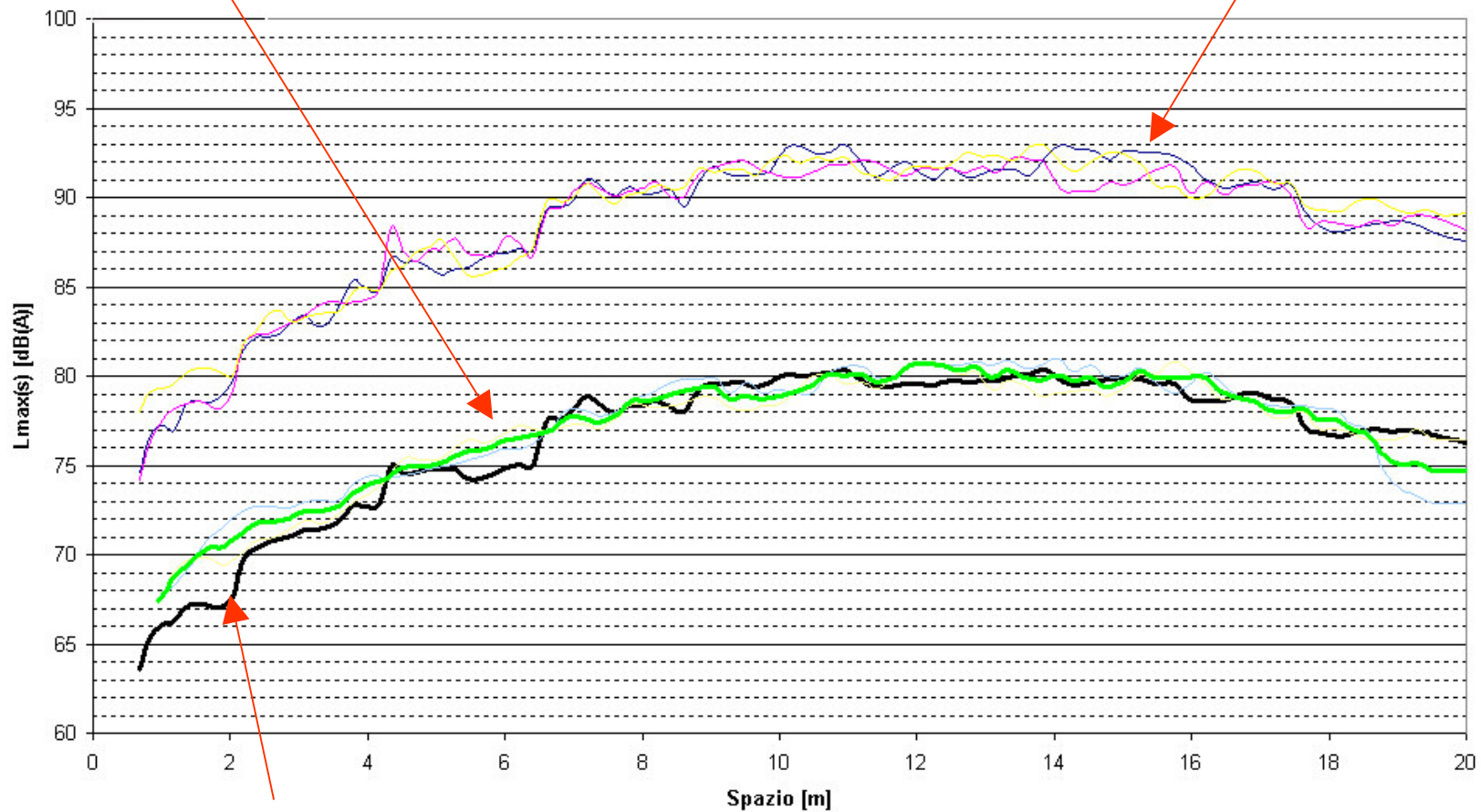


Confronto camera-pista (esempio)

Media test in pista

@150 30kmh - Dx

Test in camera



Media test in camera riportata alla pista

Strumentazione e software per l'analisi acustica (Spectra S.r.l.):

- Analizzatore ONO-SOKKI DS-2000
- Microfoni ½" BSWA TECH
- Software ONO-SOKKI DS-0221 FFT
- Calibratore LARSON-DAVID cal200

Banco a rulli e software di gestione e simulazione (API.com S.r.l.):

- Driver Aid
- Win Roll



Engines Engineering S.p.a.

Via Pasquali, 6 40055 Castenaso - Bologna

Tel. 051 6050312

Fax. 051 6050049

Rif: Ing. Cicalò Roberto

Acoustic R&D

[Back](#)